

B01

Product Specifications

Order Method:

Product name Board-to-Board
Screw Down Jumper
Assembly

Product type B01

Series No. No. of pole Color Customer Request
 × × P White



See annex
the technical drawing

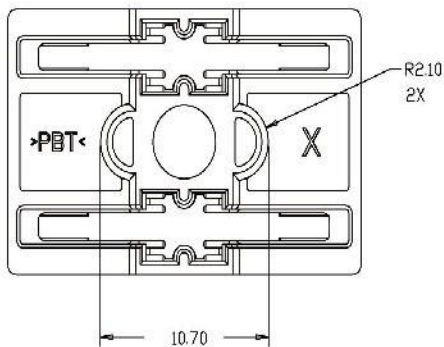
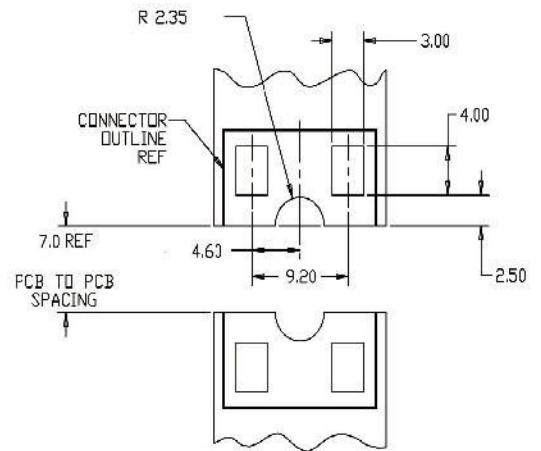
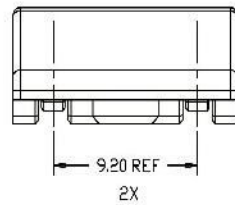
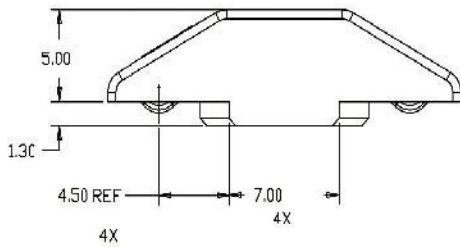
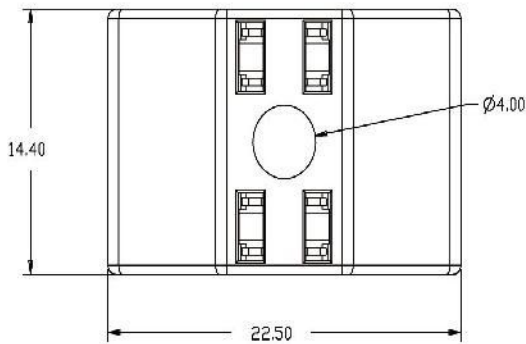
Product Parameter:

Descriptions
The board-to-board, screw down jumper assembly provides the electrical connection between two adjacent printed circuit boards in a string of printed circuit boards.
APPLICATIONS
T8–T12 fluorescent retrofit LED bulbs
LED lighting strips

LED lighting controls	
Channel lettering	
Electrical	
Operating Current	5A
Operating Voltage	250VAC/250VDC
Dielectric Withstanding Voltage	1500 VAC
Materials	
Contacts	Tin plated copper alloy
Housing	UL94-VO
MECHANICAL	
Operating Temperature	-40°C to 105°C
Mating Cycles	10
Screw down torques	0.11 Nm max
KEY FEATURES	
<ul style="list-style-type: none"> • 2 position connection assembly • Connector assembly attachment to adjacent printed circuit board via screw to heat sink fully seats electrical contacts against printed circuit board pads • Connector assembly fits onto 16.50 mm wide printed circuit board • 7.0mm printed circuit board spacing • Registration features in connector assembly align with printed circuit board cutouts • #6 screw (not included) used to secure connector assembly to tapped hole in heat sink or base • #6 screw should be zinc plated or have equivalent protective coating to prevent corrosion • Customer supplied #6 screw • Tube packaged assemblies • RoHS compliant 	

Board-to-Board Screw Down Jumper Assembly

B01



Recommended PC Board Layout

B02

Product Specifications

Order Method:

Series No. No. of pole Color Customer Request

Product name

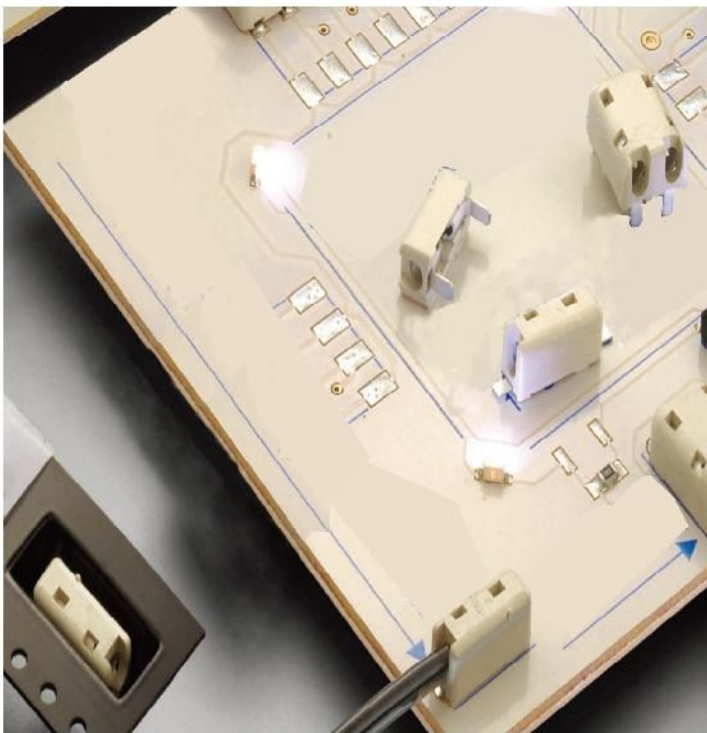
SMT and Thru-Hole
Poke-In Wire Lighting
Connectors

P

Beige

Product type

B02



See annex
the technical drawing

Product Parameter:

Descriptions

The low profile SMT and Thru-Hole Poke-In Wire connectors are designed for lighting applications. Available in surface mount and thru-hole tape and reel packaging, the connectors are designed to accept a wide range of wire sizes and types.

APPLICATIONS

LED Lighting Controls

General illumination LED fixtures

Interconnecting strings of printed circuit LED light modules

Various non-lighting applications that require attaching flying leads to printed circuit boards

Electrical

Operating Current	5A
Operating Voltage	250VAC/250VDC
Dielectric Withstanding Voltage	1500 VAC

Materials

Contacts alloy	Tin over nickel plated copper
Housing	UL94-VO

MECHANICAL

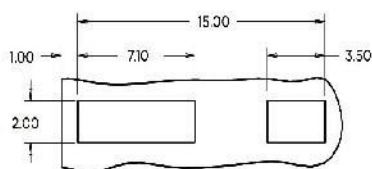
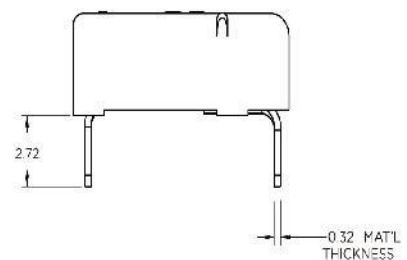
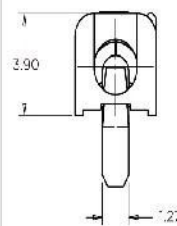
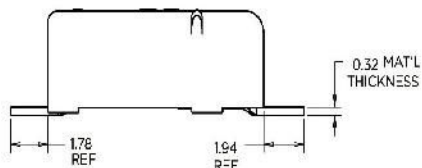
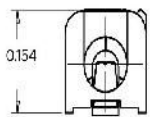
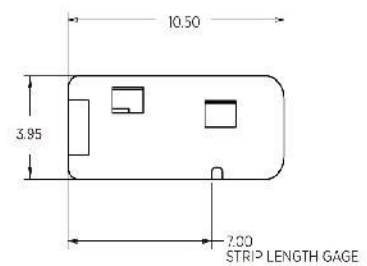
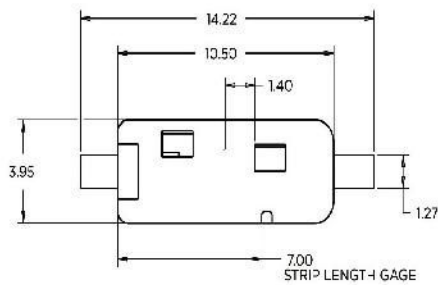
Operating Temperature	-40°C to 105°C
Wire Retention	5 lbs minimum

KEY FEATURES

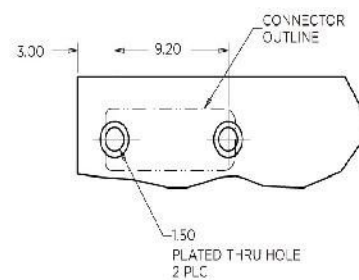
- Connectors are available in 1 and 2 positions
- Standard and Low Insertion Force, connectors available
- Accepts 18, 20 and 22 AWG solid wire; 18 and 20 AWG pre-bond stranded wire;
- Connectors are available in both black, and white colors for polarity, circuit board
- Low profile design
- Gel-filled versions are available for indoor, moisture and outdoor application
- Tape and reel packaging for high speed, SMT and Thru Hole processing
- High temperature material for reflow, processing
- Rounded corners to minimize shadowing
- Flat top surface allows for vacuum pickup
- Redundant SMT pads prevent peeling
- Side by side stackable with pads on 4mm centers
- RoHS compliant
- Cost effective alternative to hand soldering, wires to printed circuit boards

SMT and Thru-Hole Poke-In Wire Lighting Connectors

B02-1P



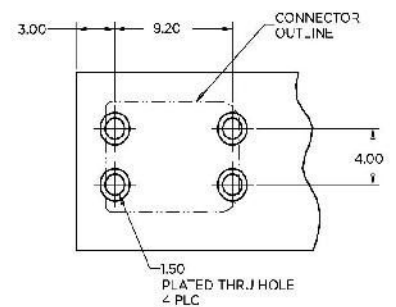
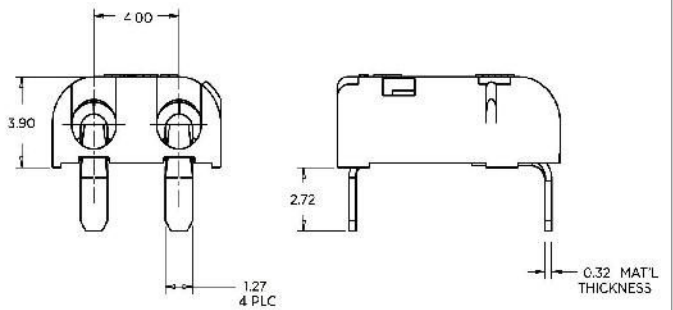
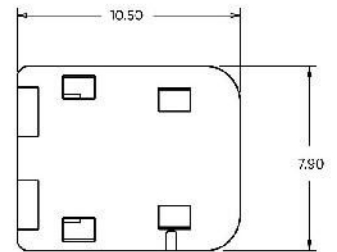
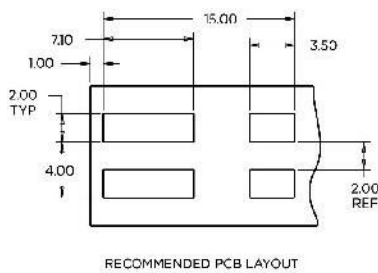
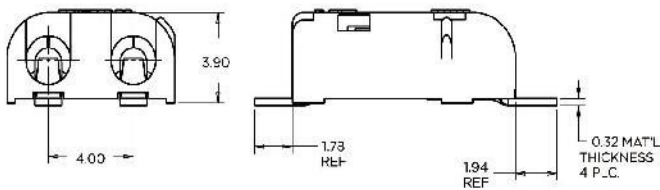
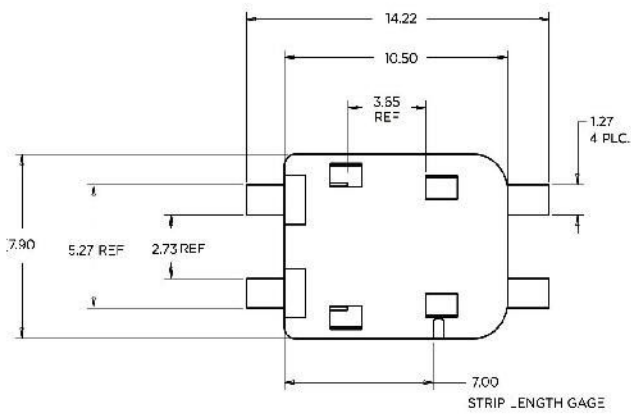
RECOMMENDED PCB LAYOUT



RECOMMENDED PCB LAYOUT

SMT and Thru-Hole Poke-In Wire Lighting Connectors

B02-2P



B03

Product Specifications

Order Method:

Product name

Hermaphroditic
Blade and Receptacle
Connector

Series No.

No. of pole

Color

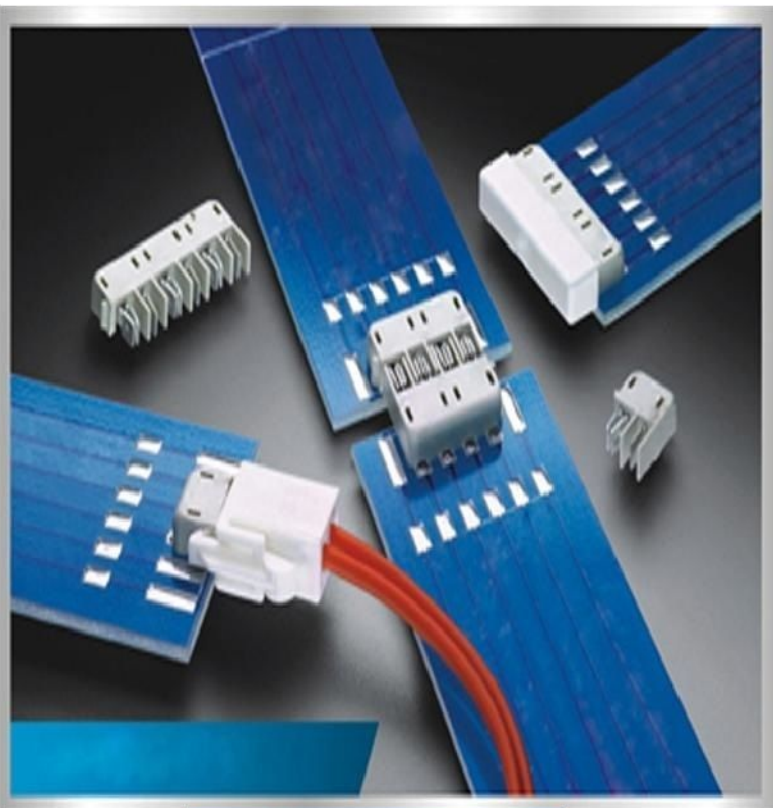
Customer Request

P

Beige

Product type

B03



See annex
the technical drawing

Product Parameter:

Descriptions

The Hermaphroditic Blade and Receptacle connector is a new SMT connector and is intended for use with in-line board-to-board applications.

APPLICATIONS

LED lighting modules

Incandescent lighting strips

Channel lettering

Electrical

Operating Current 6A

Operating Voltage 125VAC/125VDC

Dielectric Withstanding Voltage 1500 VAC

Materials

Contacts Copper Alloy, tin over nickel plated

Housing UL94-VO

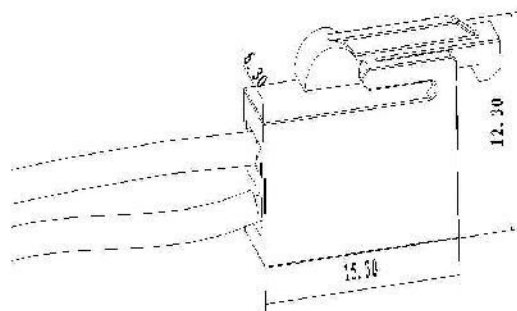
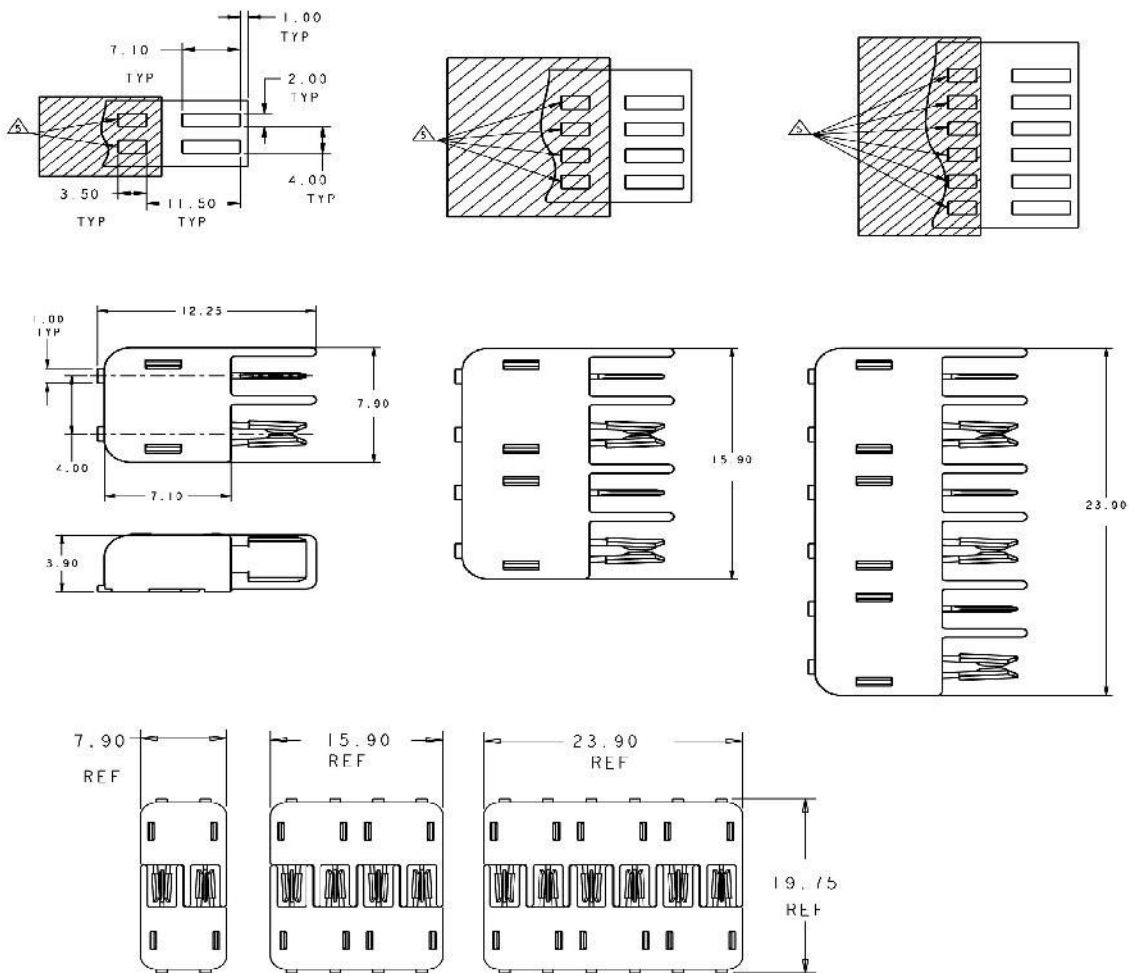
MECHANICAL

Operating Temperature -40°C to 105°C

KEY FEATURES

- Available in 2, 4, and 6 positions
- Single part to be stocked and placed onto pcb per position
- Connector mates and unmates horizontally and vertically
- Connector mates to itself
- Connector can be articulated from 90° to 180°
- Tape and reel packed for high speed SMT processes
- Low profile flat surface is compatible with SMT and reflow processing
- Rounded corners to minimize shadowing
- Solder pad footprint compatible with Electronics SMT Poke-In LED connector
- Redundant SMT pads

Board-to-Board Screw Down Jumper Assembly



B03K

B04

Product Specifications

Order Method:

Product name G13 Style SMT Assembly and End Cap Cover

Product type B04

Series No. No. of pole Color Customer Request
 × × P



See annex the technical drawing

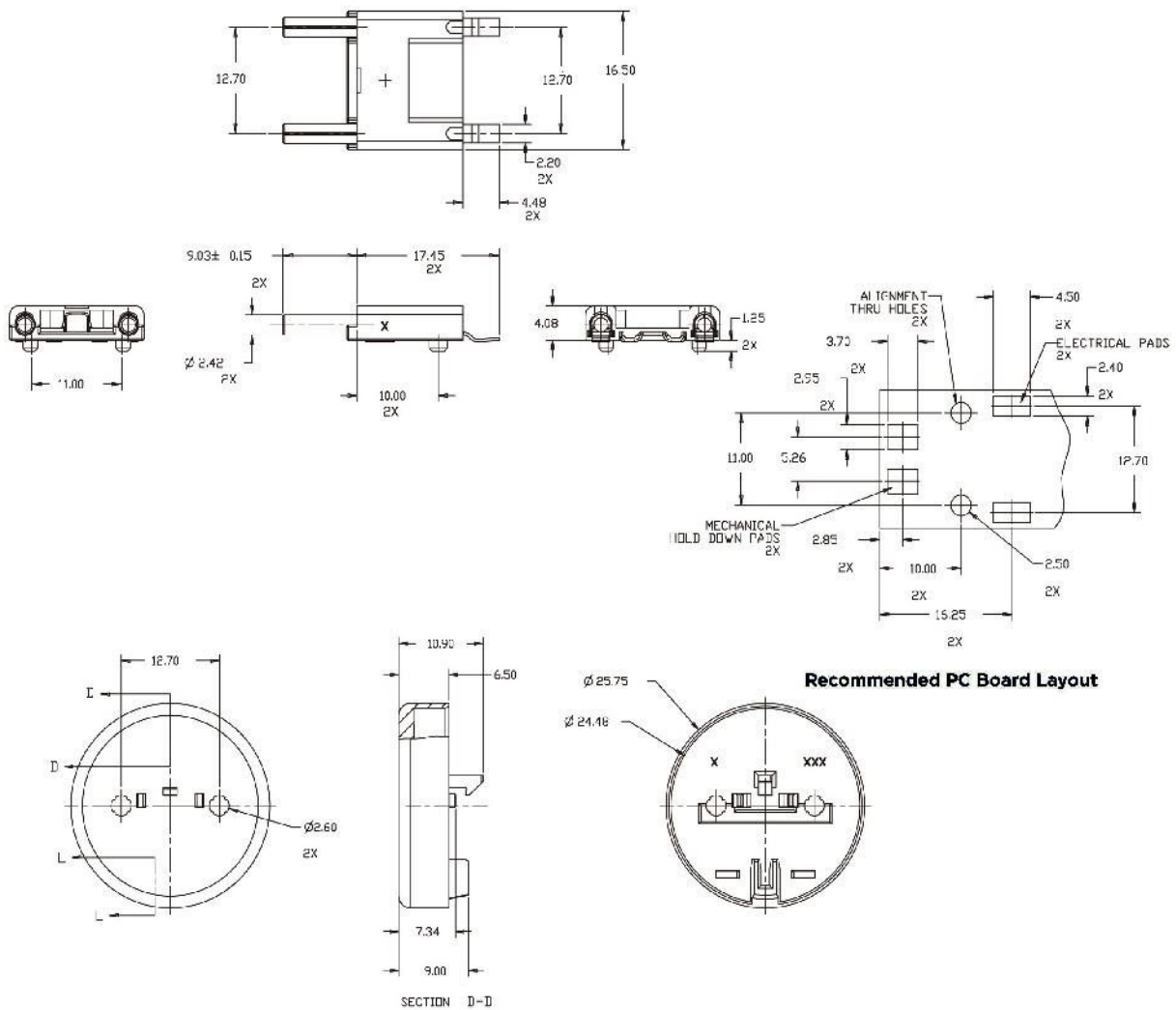
Product Parameter:

Descriptions
The G13 Style SMT Assembly and End Cap Cover are designed for use on printed circuit board LED strip lighting modules in T8 and T12 fluorescent retrofit LED tubes.
APPLICATIONS
Standard T8 and T12 fluorescent fixtures

Electrical	
Operating Current	2A
Operating Voltage	250VAC/250VDC
Dielectric Withstanding Voltage	1500 VAC
Materials	
G13 Style SMT Assembly	UL94-VO
End cap cover	UL94-VO
Contacts	Tin plated brass
SMT hold down	Tin plated brass
MECHANICAL	
Operating Temperature	-40°C to 120°C
Mating Cycles	10
KEY FEATURES	
<ul style="list-style-type: none"> • 2 Position G13 Style SMT Assembly • The End Cap Cover is designed to interface with G13 Style SMT assembly, heat sink and tube. (Custom configurations are available upon special request.) • End Cap Cover packaged unassembled • 0.5 inch pin centerline per G13 specification • The surface mount hold down provides stability during tube insertion and extraction • High temperature material for reflow processing • The G13 Style SMT Assembly is compatible with FR4 and aluminum clad boards • The G13 Style SMT Assembly is tape and reel packaged for high speed SMT processing • RoHS compliant 	

G13 Style SMT Assembly and End Cap Cover

B04



B05

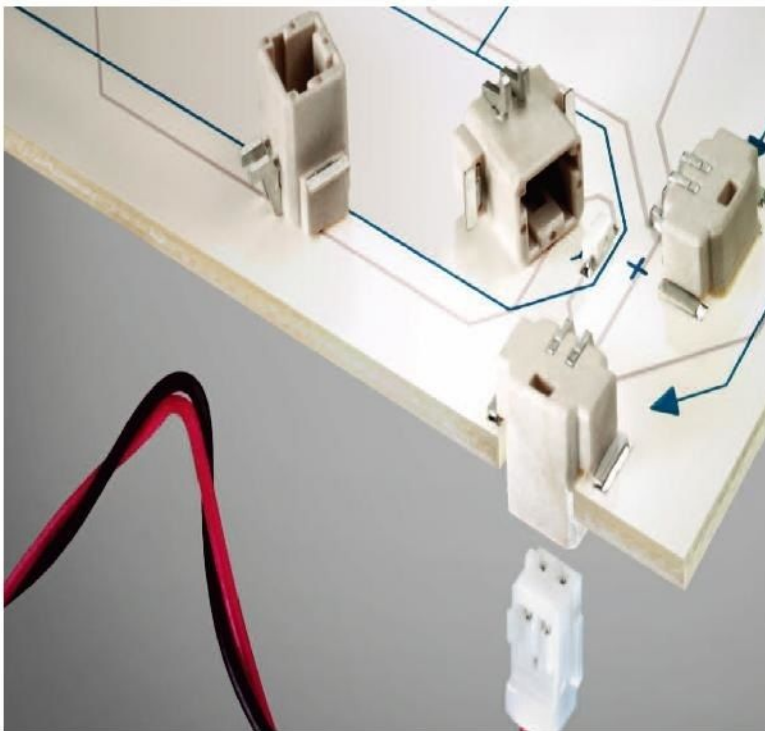
Product Specifications

Order Method:

Product name Inverted SMT Thru Board Connector

Series No. No. of pole Color Customer Request
 × × P Beige

Product type B05



See annex the technical drawing

Product Parameter:

Descriptions
The Inverted SMT Thru Board Connector provides a means to bring power to LED aluminum clad and FR4 boards from the underside of the pc board.
APPLICATIONS
LED lighting controls
Various non-lighting applications that require wire dress connections below

General LED illumination fixtures	
Indoor and outdoor lighting fixtures	
Electrical	
Operating Current	#24 AWG – 3A
Operating Current	#26 AWG – 2.5A
Operating Current	#28 AWG – 1.5A
Operating Voltage	70VAC/70VDC
Materials	
Contacts	Tin plated copper alloy
Housing	UL94-VO
MECHANICAL	
Operating Temperature	-40°C to 105°C
KEY FEATURES	
• Available in 2,3,4,5 and 6 positions	
• Eliminates wire dress management issues with discreet wire leads around the surface of the LED pc board	
• Custom length AMP Mini CT cable assemblies are available upon request	
• Accepts 2 thru 6 Position AMP Mini CT Connector	
• Low profile design	
• Connector is positioned through cutout or notch in pc board	
• Surface mount hold downs provide stability during mating and unmating	
• Rounded corners to minimize shadowing	
• High temperature material for reflow processing	
• Flat top surface allows for vacuum pick up	
• Tape and reel packaging for high speed SMT processing	
• RoHS compliant	

B06

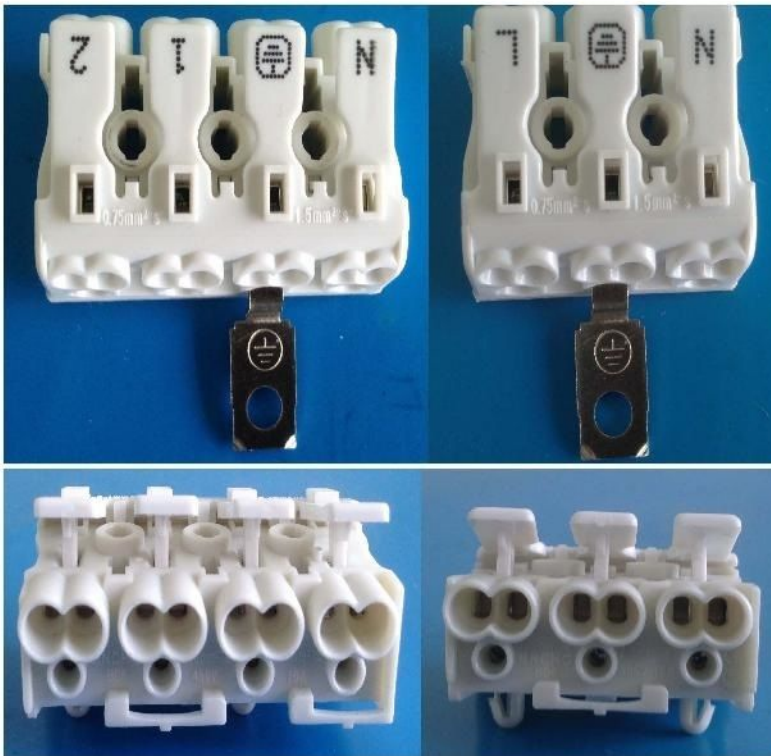
Product specification




B06

Series No. No. of pole Color Customer Request

— P — 白色 —

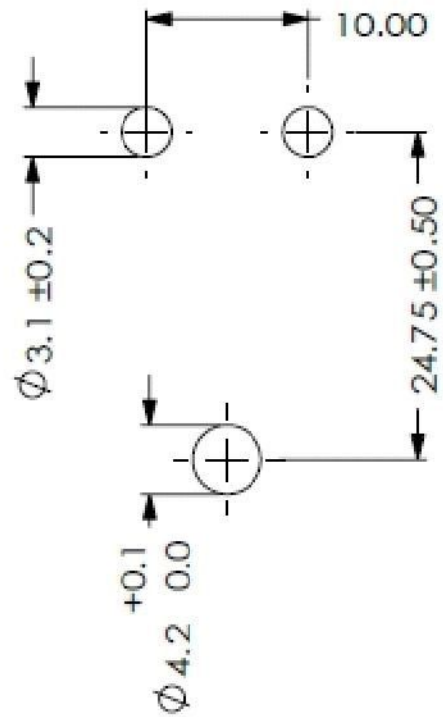
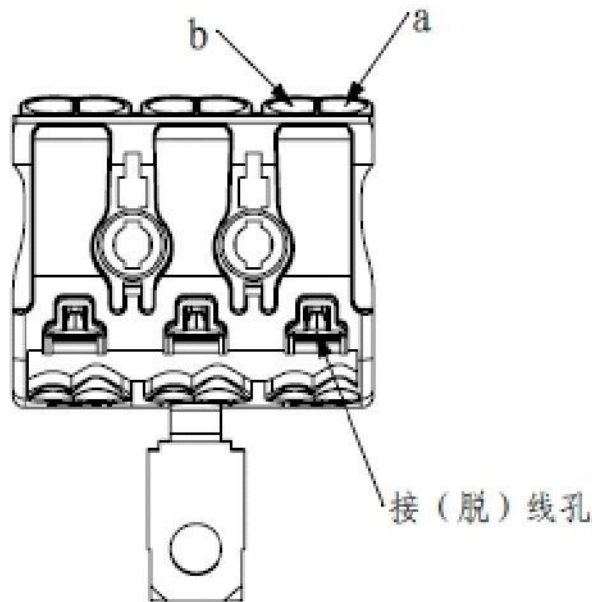
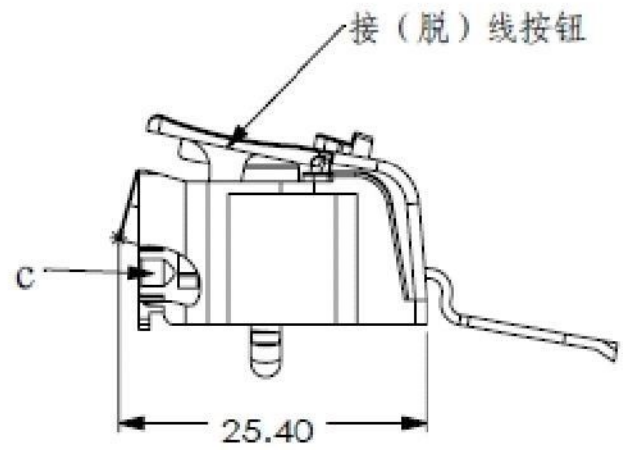
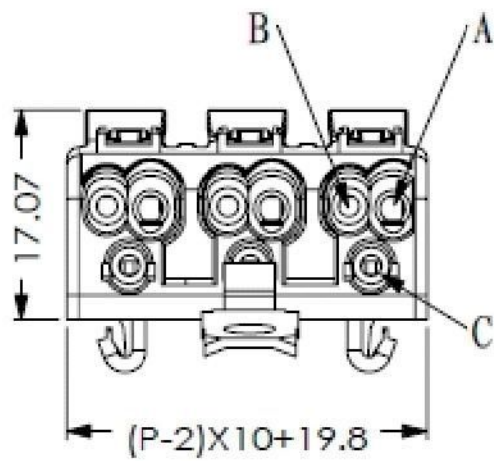
Product Parameter:



Appearance		
Pitch	10mm	
Commonly pin	2-5 Pin	
Color	white	
Strip length	8-10mm	
<input checked="" type="checkbox"/> with earth tag <input type="checkbox"/> no earth tag <input checked="" type="checkbox"/> with "J"leg <input type="checkbox"/> no "J"leg		
Material		
Casing	PPA&UL94V-0	
clamping element	copper	
locking wiresnapnel	stainless steel	
Electrical		
Voltage (V)	450	
Current (A)	16	
rated connection area (mm ²)	wiring pole (A/a)+(B/b)	wiring pole(C/c)
Terminal (A, B, C)	0.5 ~ 1.5("r", "f", "s")	0.5~0.75 ("s")
Terminal (a, b, c)	0.5 ~ 2.5("r", "f", "s")	
Certification	  	
Mechanical		
Temperature range	T90	

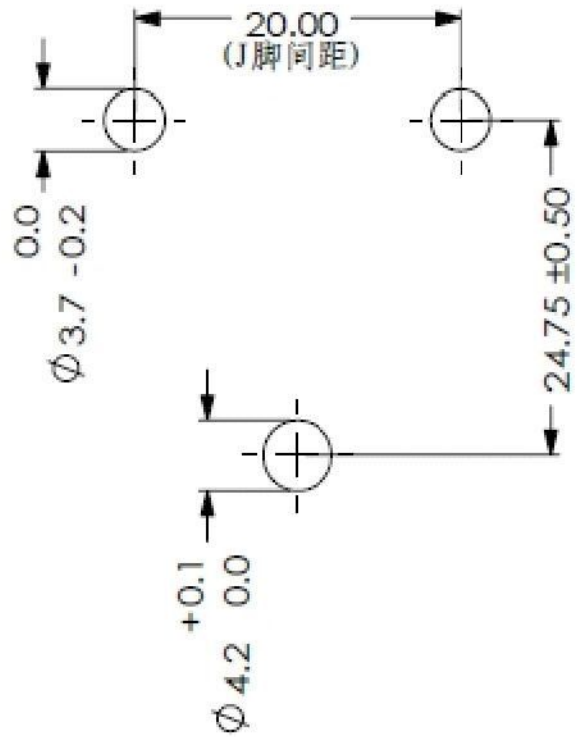
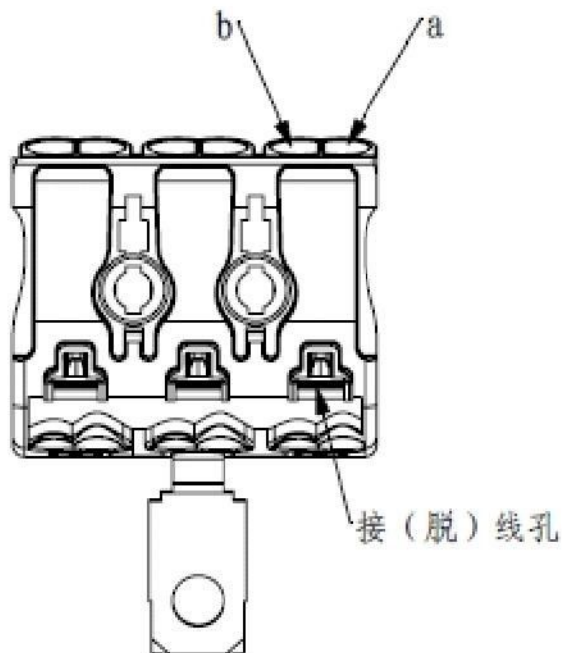
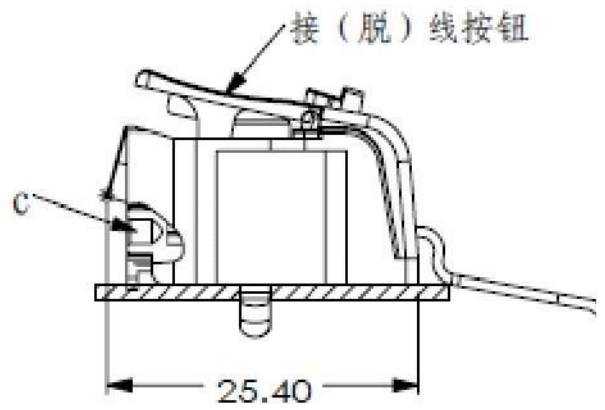
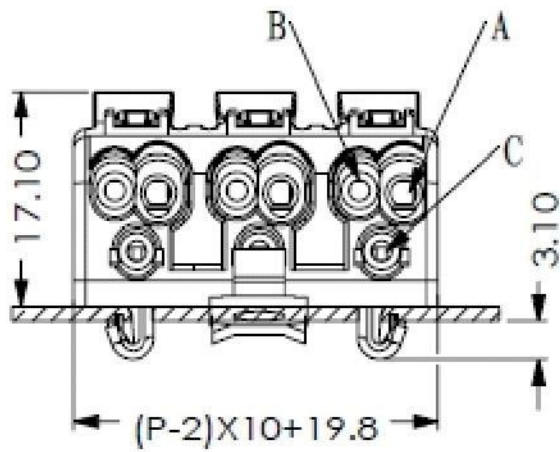
B06

Push Button Screwless Terminal B06



B06

Push Button Screwless Terminal B06



B07

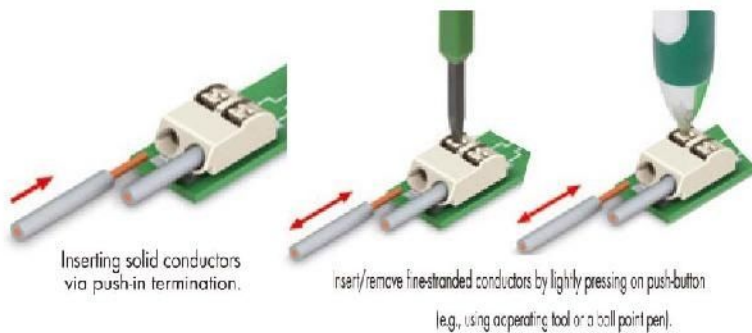
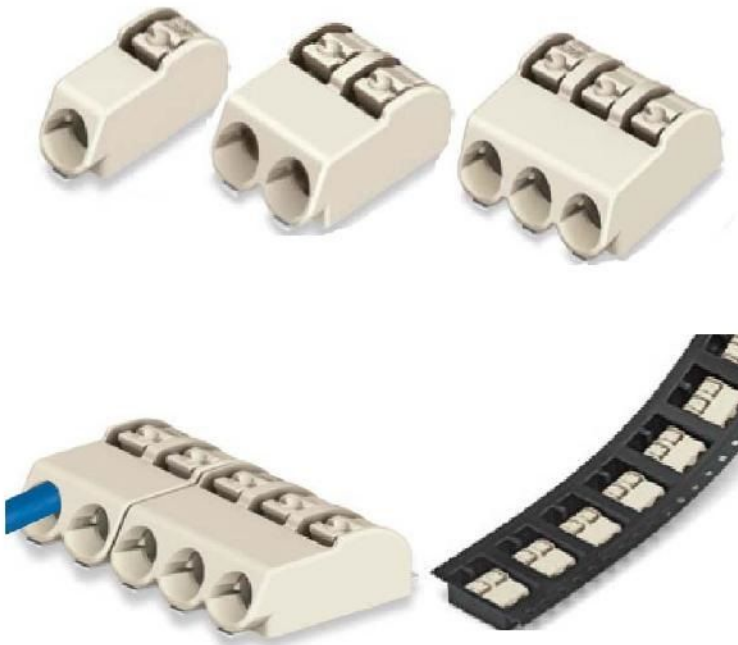
Product Specifications

Product name SMD Terminal Strips with Push-Buttons

Product type B07

Order Method: :

Series No. No. of pole Color Customer Request
 — P — Gray —

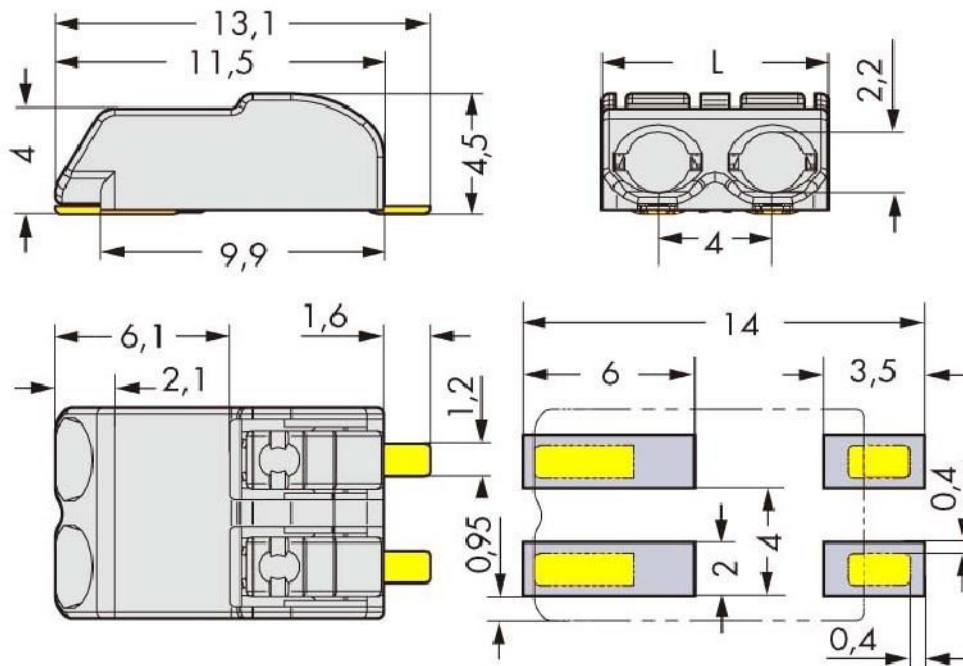


Product Parameter:

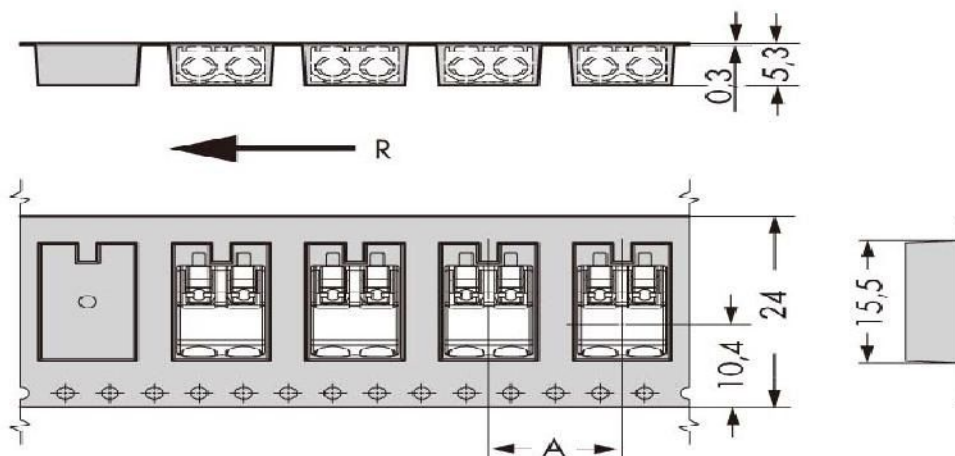
Appearance	
Pin Spacing	4mm
Commonly used figures	1-3Pin
Color	Light gray
Strip length	6-7mm
Wire connected quantity	1-3
Material	
Shape	PPA&UL94V-0
clamping unit	Copper, tin-plated
SMD contact	Copper, tin-plated
Electrical	
Operating Voltage	600V (1P) 250V(2P or 3P)
Operating Current	9A
Conductor size (mm ²)	0.2~0.75(solid&fine-stranded)
MECHANICAL	
Conductor entry angle	0° to PCB
Connect method	CAGE CLAMPing connection and push-buttons
Temperature range	-60℃~+105℃
Package	tape-and-reel packaging

See annex the technical drawing

SMD Terminal Strips with Push-Buttons B07



$$L = (\text{pole no.} \times 4 \text{ mm}) - 0.1 \text{ mm}$$



R = Feed direction

$$A = (\text{pole no.} \times 4 \text{ mm}) + 4 \text{ mm}$$

Product Specifications

Order Method: :

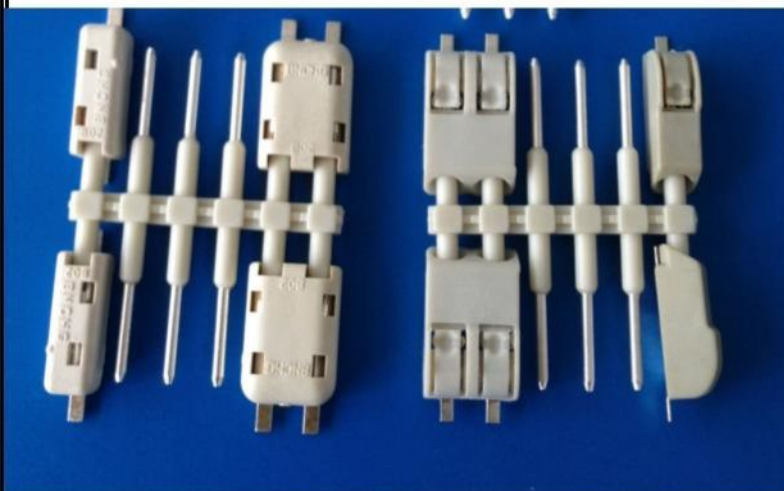
Product name LED Jumper

Series No. No. of pole Color Customer Request

— P — Gray —

Product type B07-1A-2A-3A

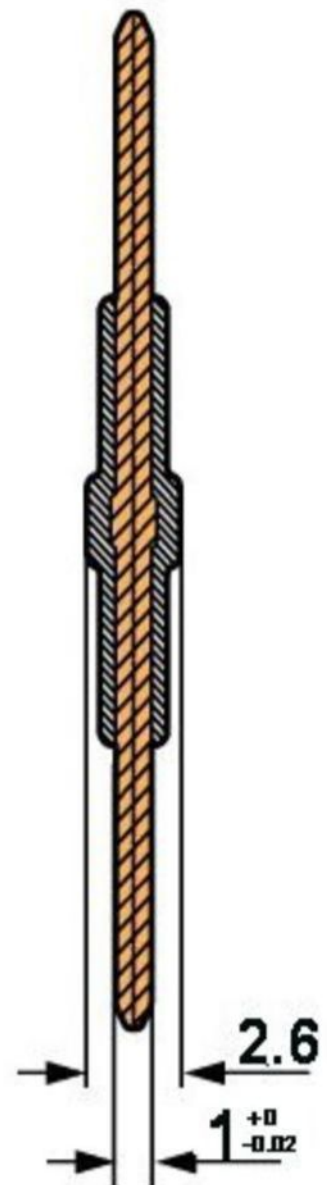
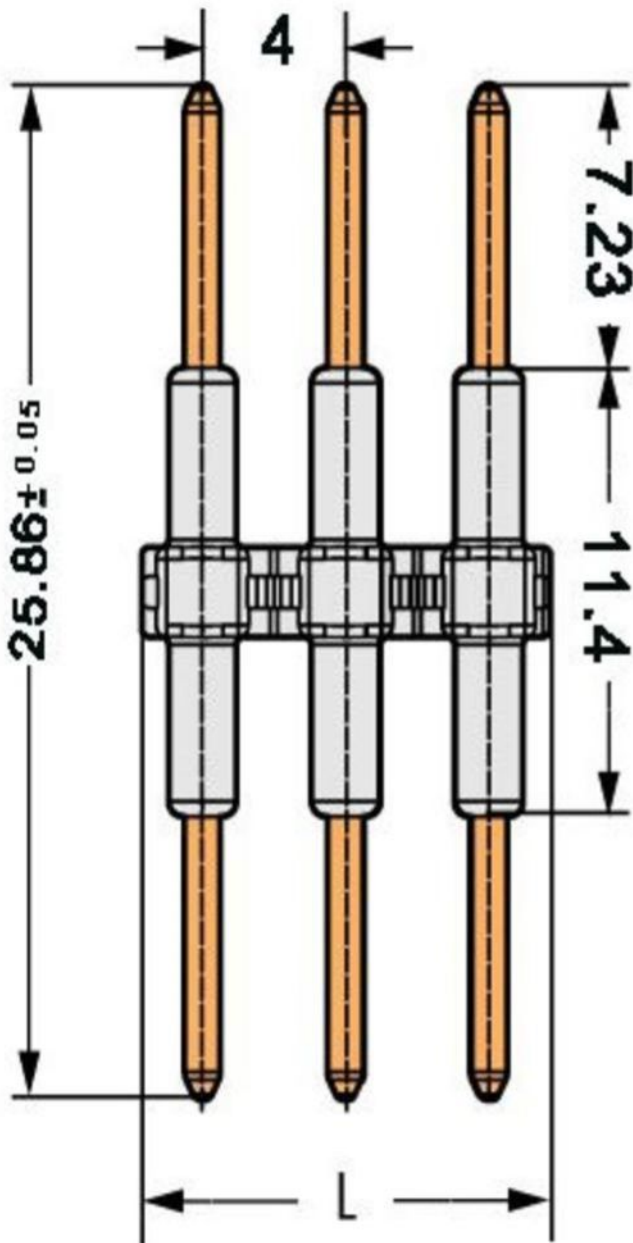
Product Parameter:



Appearance	
Pin Spacing	4mm
Commonly used figures	1-3Pin
Color	Light gray
Applied	B07&B02 connector
Material	
Shape	Polyamide 66 level and polycarbonate UL94V - 0
SMD contact	Copper, Ag-plated
Electrical	
Operating Voltage	(60V/320V/63V)
Operating Current	9A
Impulse voltage	2.5KV
MECHANICAL	
Temperature range	-60 °C ~ +105 °C
Package	Neutral packing

See annex
the technical drawing

LED Jumper B07-1A-2A-3A



Order Method: :

Product name Terminal
 Product type B08-3P

Series No. No. of pole Color Customer Request
 [] p white []



Product Parameter:

Appearance	
Commonly used figures	1-12Pin
Color	White
Strip length	4.5~6mm
Material	
Shape	PA66&UL94V-0
clamping unit	Copper, tin-plated
Electrical	
Operating Voltage	380V
Operating Current	10A
Conductor size (mm ²)	2.5
MECHANICAL	
Temperature range	T90
Package	Neutral

See annex the technical drawing

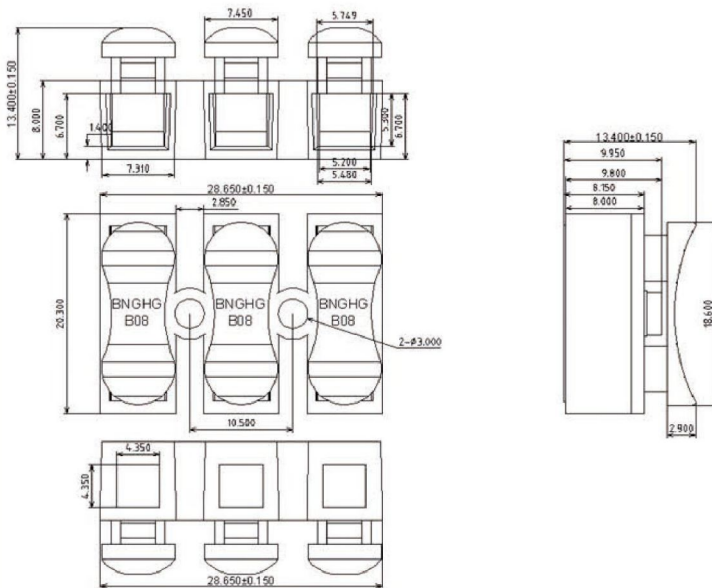


乐清市斌成电子有限公司
 YUEQING BINCHENG ELECTRONICS CO., LTD

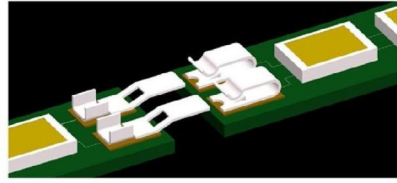
Product Specifications

Annex

Terminal B08-3P

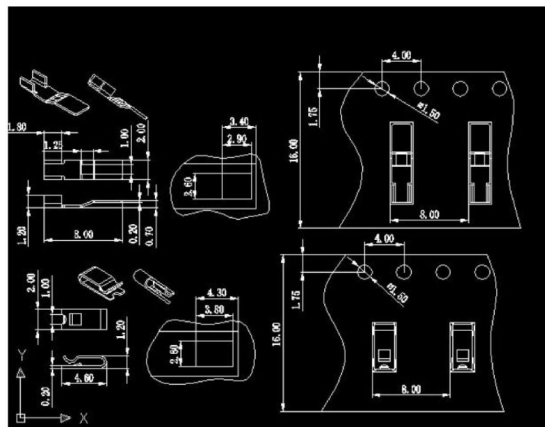


B09 board to board connector



B09-F

B09-M



Specification:

Type: male & female
Pin material: phosphor copper, tin plating
Current: 10A
Voltage: 250V/ 450V
Application: LED board to board connection

B10

Specification

Product LED照明卡边缘式连接器
 Model B10

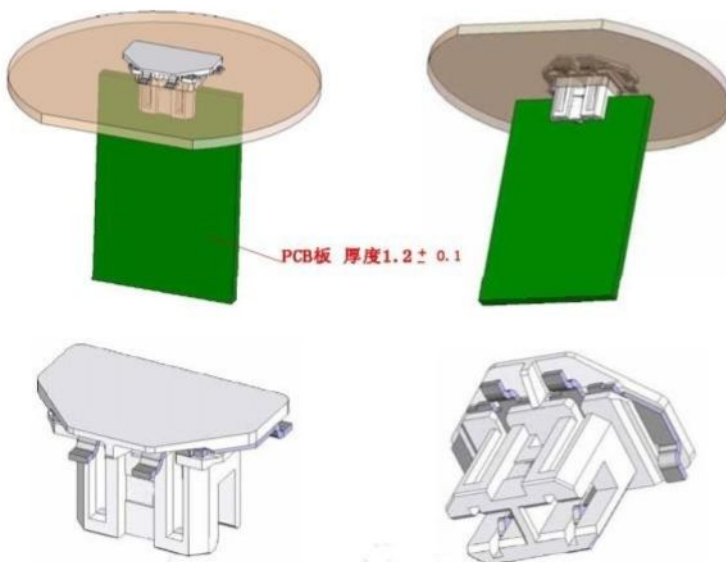
Order:

Series No. No. of pole Color Customer Request
 [] — [] P — white — []



Product Parameter:

appearance	
height	1.6mm
pin number	2 Pin
color	white
Access mode:	PCB straight insert
Material	
housing	LCP
clamping element	copper alloy , tin plating
Electrical Performance	
Rated Current	3A
Rated Voltage	200V (AC/DC)
Resistance to pressure	500VA/minute
Contact Resistance	60 milliohms (max.)
Insulated resistance	10 megohms (min.)
Mechanical properties	
Temperature range	-40℃ ~ +105℃
Packing	in reel
Properties	
1、 This is a card edge connector, it is used in led lighting power 2、 it is applied to led bulb & led lighting. 3、 it allows reflow soldering installation 4、 height: 1.6mm 5、 it can directly insert into the PCB 6、 Using SMT Package 7、 no wire to connect	

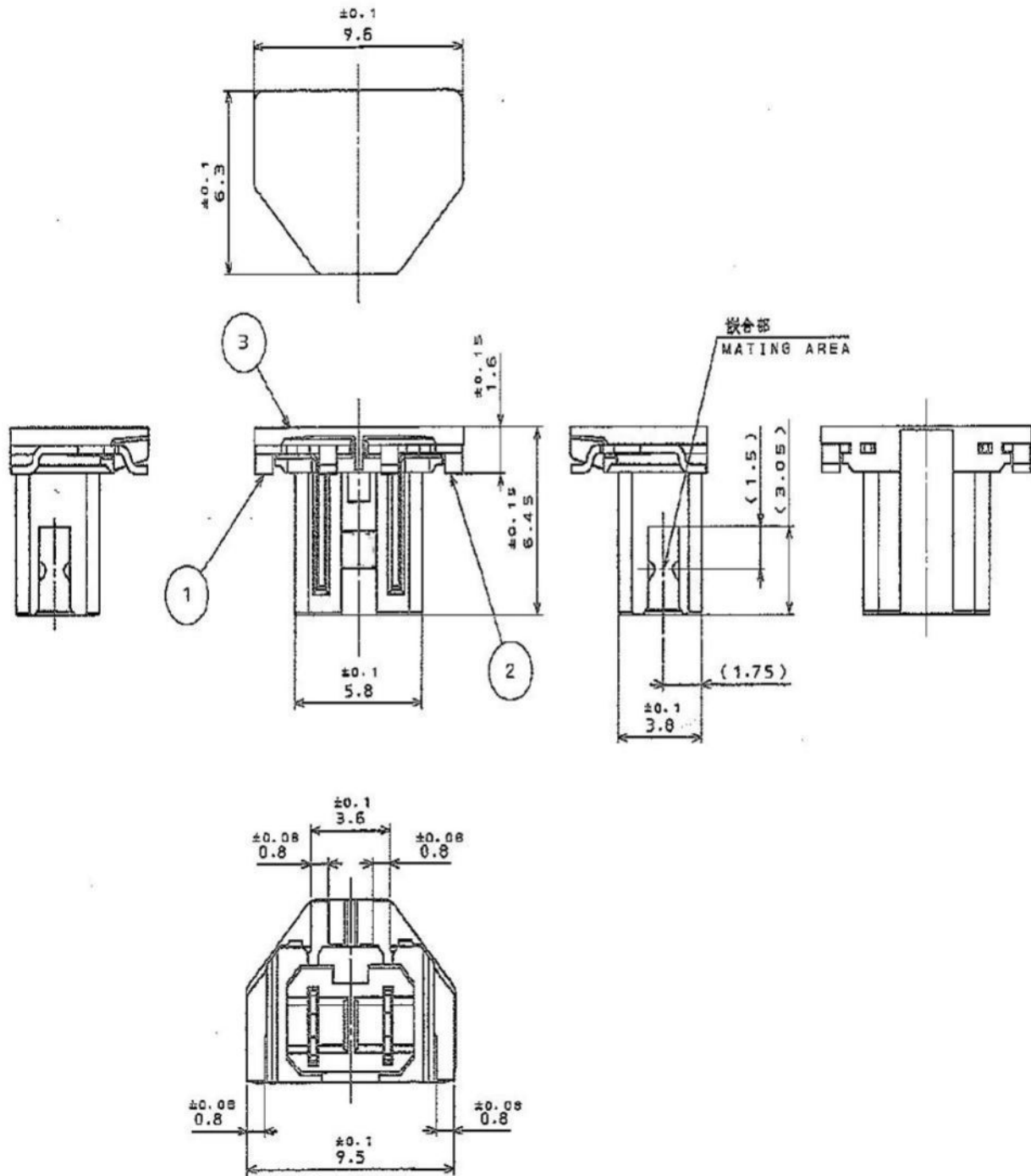


see the attached

Specification

PART 1

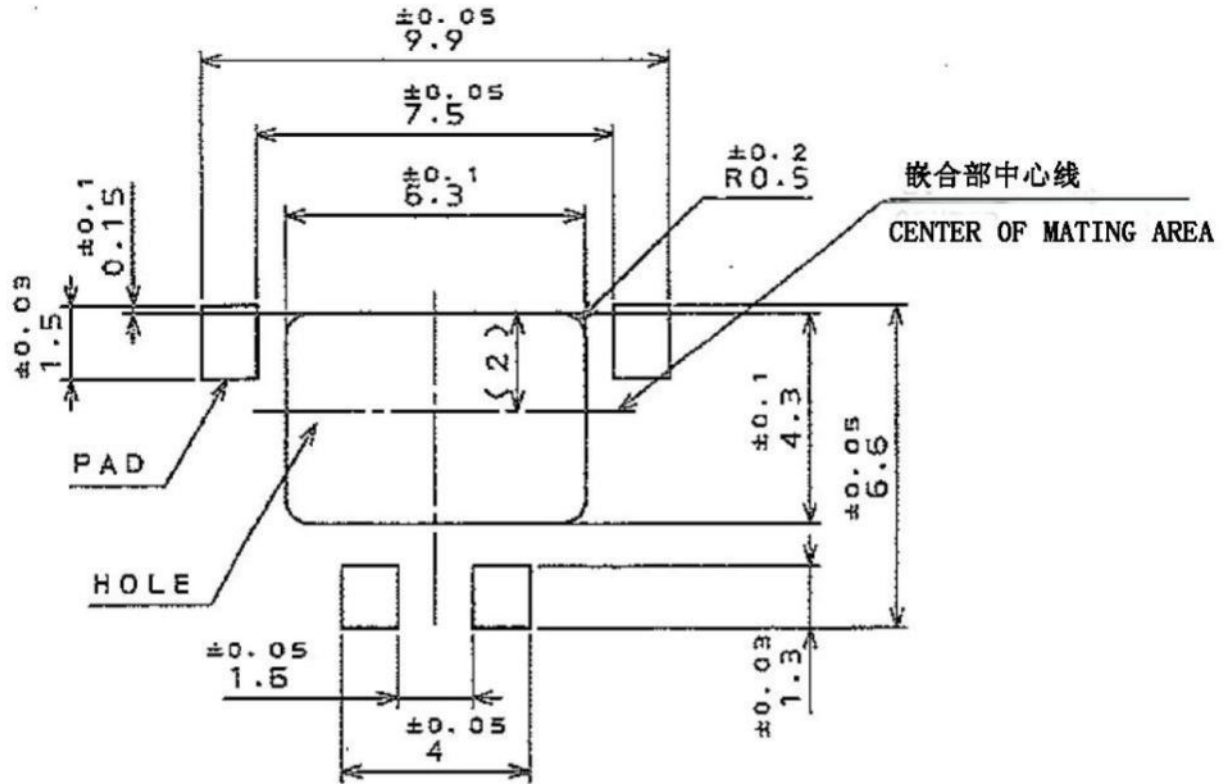
LED card edge connector B10



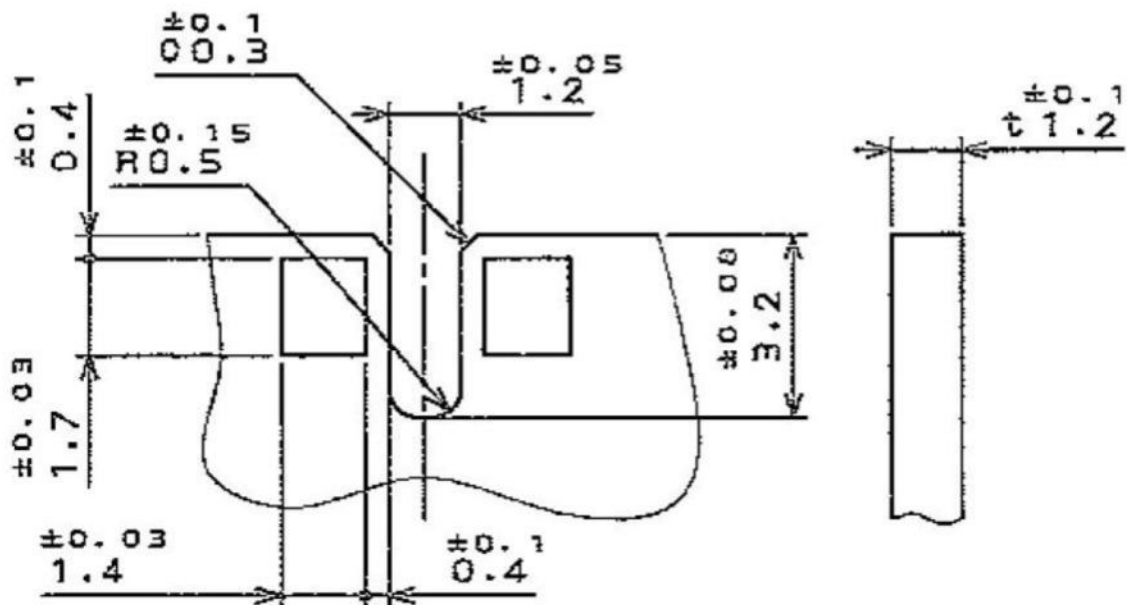
Specification

PART 2

LED card edge connector B10



参考适合PCB板的尺寸 (SMT侧)
APPLICABLE PCB DIMENSION (SMT) (REF.)



参考适合PCB板尺寸